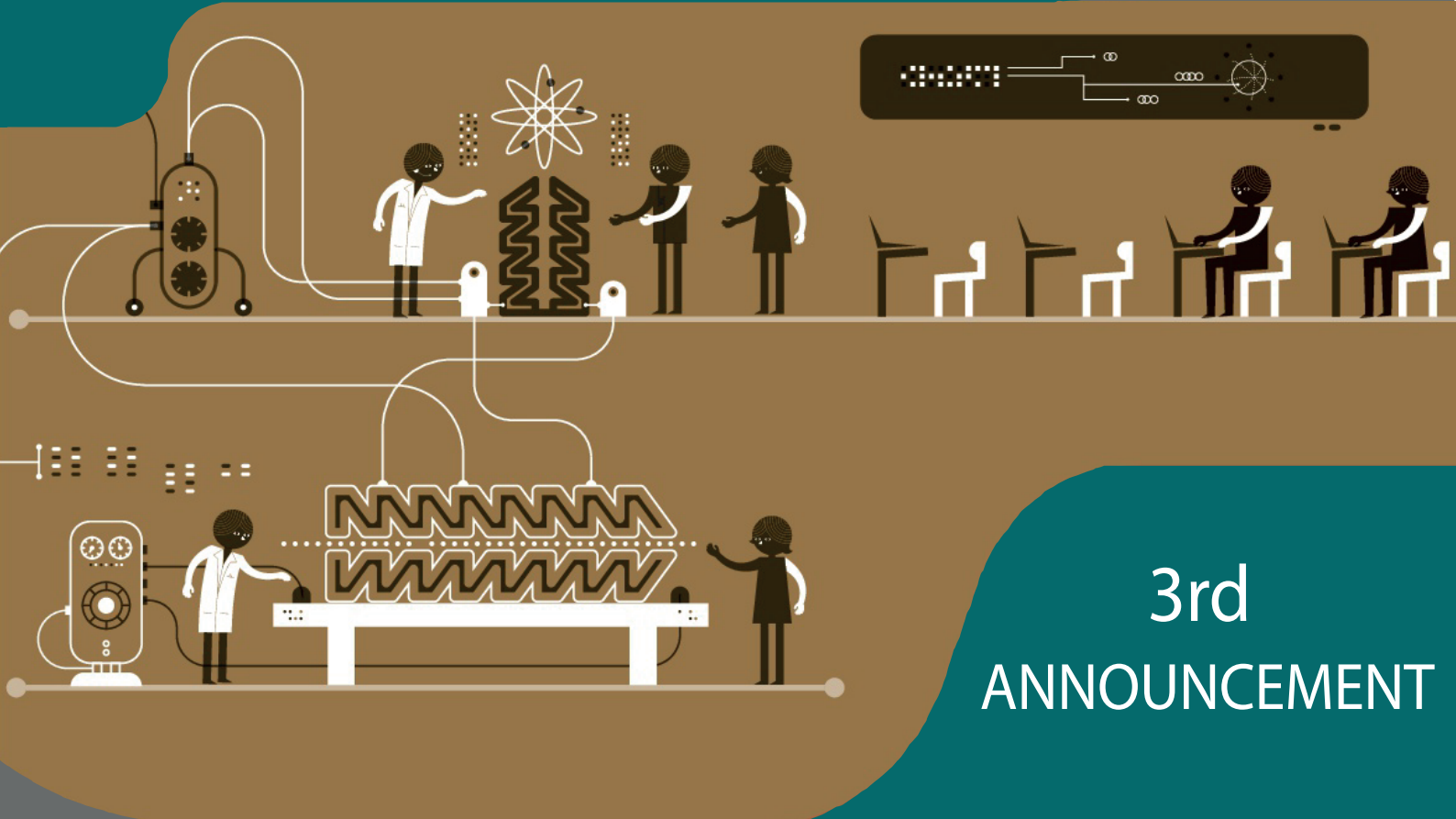
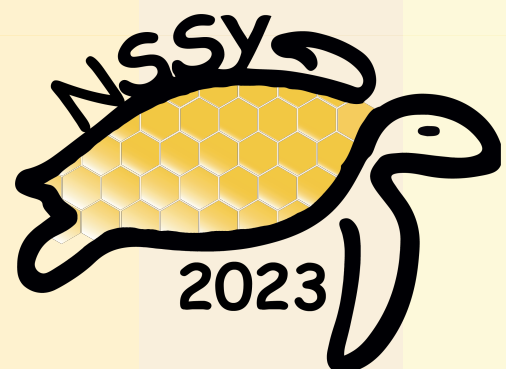




SCHOOL OF
PHYSICAL SCIENCES
AND NANOTECHNOLOGY



3rd ANNOUNCEMENT



Nanoscience Summer School @ Yachay 2023
April, Sunday 23rd to April Saturday 29th
Salón de la Ciudad, Santa Cruz
Galápagos-Ecuador
<https://nssyconference.wixsite.com/2023>



Preliminary Program

FINAL PROGRAM NSSY 2023 @ GALAPAGOS

| | CHARACTERIZATION OF NANOSTRUCTURES | MOLECULAR MODELING OF NANOSTRUCTURES | 2D NANOMATERIALS AND HETEROSTRUCTURES | SYNTHESIS OF NANOSTRUCTURES | THEORY AND SIMULATIONS IN NANOSCIENCE | | |
|--|--|---|--|--|---|--------------------|--|
| Sunday, April 23 | Monday, April 24 | Tuesday, April 25 | Wednesday, April 26 | Thursday, April 27 | Friday, April 28 | Saturday, April 29 | |
| REGISTRATION | | KEY NOTE SPEAKER Vito Despoja 8:15 - 9:00 | KEY NOTE SPEAKER Paola Ayala 8:15 - 9:00 | KEY NOTE SPEAKER Carlos Martínez 8:15 - 9:00 | KEY NOTE SPEAKER Vladimiro Mujica 8:15 - 9:00 | DEPARTURE | |
| | INSCRIPTIONS 9:00 - 11:00 | INVITED SPEAKER Alicja Mikolajczyk 9:00 - 9:30 | INVITED SPEAKER Mildred Quintana 9:00 - 9:30 | INVITED SPEAKER Victor Guerrero 9:00 - 9:30 | INVITED SPEAKER Ernesto Medina 9:00 - 9:30 | | |
| | | INVITED SPEAKER Duncan Mowbray 9:30 - 10:00 | INVITED SPEAKER Henry Osorio 9:30 - 10:00 | INVITED SPEAKER Lenin Ramírez 9:30 - 10:00 | YOUNG RESEARCH Anthony Vizcaino 9:30 - 9:50 | | |
| | COFFEE BREAK 10:00 - 10:45 | | | | | | |
| | INAUGURATION 11:00 - 12:00 | KEY NOTE SPEAKER Carlos Sabater 10:45 - 11:30 | ORAL CONTRIBUTION Igor Carvalho 10:45 - 11:15 | INVITED SPEAKER Raúl Dávalos 10:45 - 11:15 | YOUNG RESEARCH Charlotte Berrezueta 10:45 - 11:05 | | |
| | | | YOUNG RESEARCH Verónica Quilumba 11:15 - 11:35 | ORAL CONTRIBUTION Hilda Zavaleta 11:15 - 11:45 | YOUNG RESEARCH Joselyn Benalcazar 11:05 - 11:25 | | |
| | | | YOUNG RESEARCH Adriana Vázquez 11:35 - 11:55 | ORAL CONTRIBUTION Igor Carvalho 11:45 - 12:15 | CLOSING REMARKS 11:25 - 11:55 | | |
| | PLENARY TALK Vincent Meunier 14:00 - 15:00 | | | | | | |
| | INVITED SPEAKER Patricio Espinoza 15:00 - 15:30 | POSTER SESSION I 15:00 - 17:45 | CONFERENCE TOUR 13:00 - 19:00 | POSTER SESSION II 15:00 - 17:45 | | | |
| | INVITED SPEAKER Carla Bittencourt 15:30 - 16:00 | | | | | | |
| | COFFEE BREAK 16:00 - 16:45 | | | | | | |
| | INVITED SPEAKER Jorge Serrano 16:45 - 17:15 | | | | | | |
| | ORAL CONTRIBUTION Carlos Reinoso 17:15 - 17:45 | | | | | | |
| | WELCOME RECEPTION | ORAL CONTRIBUTION Andrey Mereshkenko 17:45 - 18:15 | PLENARY TALK Eduard Llobet 18:00 - 19:00 | KEY NOTE SPEAKER Denis Kochan 18:00 - 18:45 | | | |
| YOUNG RESEARCH Jonathan Escorza 18:15 - 18:35 | | | | | | | |
| ORAL CONTRIBUTION Johnny Chimborazo 18:35 - 19:05 | | | | | | | |
| DINNER 19:05 - 21:00 | | DINNER 19:00 - 21:00 | DINNER 19:00 - 21:00 | DINNER 19:00 - 21:00 | | | |



IMPORTANT CONSIDERATIONS:

Information for scientific contributions:

Every participant that will present a poster, contributed talk, young research talk, invited talk, plenary talk or keynote talk presentation should follow the following instructions:

- I. Plenary talk research lectures are scheduled for 50 minutes, including 10 minutes for discussion.
- II. Keynote talk research lectures are scheduled for 40 minutes, including 5 minutes for discussion.
- III. Invited and oral contribution research lectures are scheduled for 25 minutes, including 5 minutes for discussion.
- IV. Young Researcher Talks are scheduled for 15 minutes, including 5 minutes for discussion.
- V. Posters have to be designed in A0 - Portrait format. (W84,1xL118,9cm) you can find the suggested format in the following link: <https://nssyconference.wixsite.-com/2023/important-information>. The poster session days are highlighted in the scheduled.

Before you travel to Galapagos

I. Please take a look to the Immigration and Customs information to Galapagos. As the Galapagos Islands are a natural reserve, it is strictly controlled, and there is a long list of products forbidden to enter the Island. Be sure that none of those are with you to avoid any delay or misunderstanding. More info at:

https://www.discovergalapagos.com/sicgal_products_list%20january%2020091.pdf

https://www.igtoa.org/travel_guide/essential_info#-customs

II. Please be sure to contact the hotel in case you arrive before the 23 April or if you are planning to leave after the 29 April. We want to remind you that we have arranged a place for you according to your category at Hotel Palm Garden starting from the 23 April to check out on the 29 April. Contact information to extend your stay: Olivia Villon, hotelpalmeras@hotmail.com

III. Be on time at the Airport (at least 2hrs before your flight). Your flight to Galapagos is a local flight, however, the Galapagos National Park has special regulations that need to be followed. You have to pass through Immigration and Customs. All bags, including both checked and carry-on luggage, will be subject to inspection as described in point I. Personal effects, cameras, and camera accessories may be temporarily imported without duty.

IV. Keep at least two printed copies of your "CERTIFICADO DE TRANSEÚNTE" with you before your arrival to Galapagos from Quito or Guayaquil airports, and also bring with you the original document described in your certificate. This document exonerates you from the cost of the TCT card and the taxes of entrance to Galapagos National Park.

IMPORTANT: Without this document you need to follow these steps and pay for those expenses: <https://www.gobiernogalapagos.gob.ec/preguntas-y-respuestas-frecuentes-control-migratorio-tct/>

During your trip to Galapagos

I. In the airport (Quito or Guayaquil): Approach the stand of Galapagos at the airport, to acquire the TCT card. Here is the first time you present your "CERTIFICADO DE TRANSEÚNTE".

II. Go to the Biosecurity counter to get your luggage checked.

III. Do your normal checking at the counter of your airline as it was a regular flight.

IV. Upon arrival you will have to pay the fee for entrance to the Galapagos National Park. With your "Certificado de transeunte" you won't have to pay anything.

At your arrival to Galapagos

I. You arrive at Baltra airport and follow the registration protocols.

II. You go to the buses of "LOS LOBITOS", which say "Canal de Itabaca" that bus takes you to the Canal the cost to pay is (\$ 5 per person) and when you arrive at the Itabaca Canal you will see the boats.

III. Take the boat and the cost to pay is (\$1 per person) when you cross the Canal, you will see the taxis and buses:

*If you take the BUS: The cost is \$5 per person and they leave you at the last stop in Puerto Ayora, which is in the Market, and then you can take a taxi to get to the hotel Palm Garden with a cost of \$1.5

*If you take a TAXI: The cost is \$25, and it reaches 4 people per taxi. This taxi will take you directly to Hotel Palm Garden, address:

Tomas de berlanga s/n e islas plazas, Santa Cruz 200350.